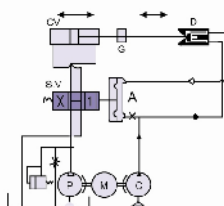


Circuit Component



**Features :**

- Traditional auto EPC, economic and practical.
- Hydraulic pressure adjustable.
- Sensitive movement, high accuracy.
- Long service life.

**Driving :**

- Motor : 1/2HP - 4P 220/380/440 3 phase 50/60HZ
- Pump capacity: 3L/min-5L/min
- Oil tank : 2A 8L ,
- Hydraulic pressure : 15kg/cm<sup>2</sup>
- Oil : CPC RL68 /SHF 32
- Temperature : -10 ~+60
- oil cylinder : Select from cylinder dimension

**Sensor :**

- fluidic : Air
- air pressure : 200mmH<sub>2</sub>O
- Air capacity : 60 L/min,
- Small: material max thickness : 10mm (standard )
- Large: material thickness : 11-30mm (option)

**Function :**

- cylinder press : 180kg(DIA 40MM cylinder)
- operating speed : 30mm/sec (Unload)
- Accuracy : 0.1mm
- sensitivity : 0.3sec

**HC-2A: Air Nozzle Sensor Automatic**

This type used to sensing paper, board, foil, rubber, and transparent material but not for mesh materials that edge without any coating

**Other :**

- weight : 2A 40kg , (without cylinder)
- Installation : horizontal

The specification HC-2AM as HC-2A but with manual control switch to align stand position after material run off and set up.

